

Diversity Data on Full-Time Faculty Members and Undergraduates

Fall 2023

When reporting campus population data to the federal government, institutions must use a set of categories that blend race, ethnicity, and citizenship. For example, non-U.S. citizens are reported as such, regardless of their race/ethnicity. The tables below show those figures as well as the ones that result when we count our non-U.S.-citizen students and faculty members by their race/ethnicities. These methods of counting yield two different measures of student and faculty diversity, neither of which is necessarily more accurate. For some purposes, we are interested in knowing our percentage of U.S. students and faculty of color, and for other purposes, we want to know about people of color in general. (Note that students and faculty members counted as U.S. citizens include foreign-born, naturalized citizens; permanent residents; and dual citizens.)

FALL 2023 FULL-TIME FACULTY MEMBERS

	ONLY U.S. CITIZENS COUNTED BY RACE/ETHNICITY		ALL FACULTY COUNTED BY RACE/ETHNICITY	
	#	%	#	%
American Indian or Alaska Native		0.0%		0.0%
Asian	20	10.7%	28	15.0%
Black or African American	9	4.8%	10	5.3%
Hispanic or Latino	13	7.0%	15	8.0%
Native Hawaiian or Other Pacific Islander		0.0%		0.0%
Two or more races		0.0%		0.0%
White, non-Hispanic	131	70.1%	134	71.7%
Race unreported		0.0%		0.0%
Non-U.S. citizens	14	7.5%		
TOTALS	187	100.0%	187	100.0%

% U.S. citizen faculty of color	22.5%
% faculty of color	28.3%

Source: Office of Institutional Research tallies using Common Data Set guidelines

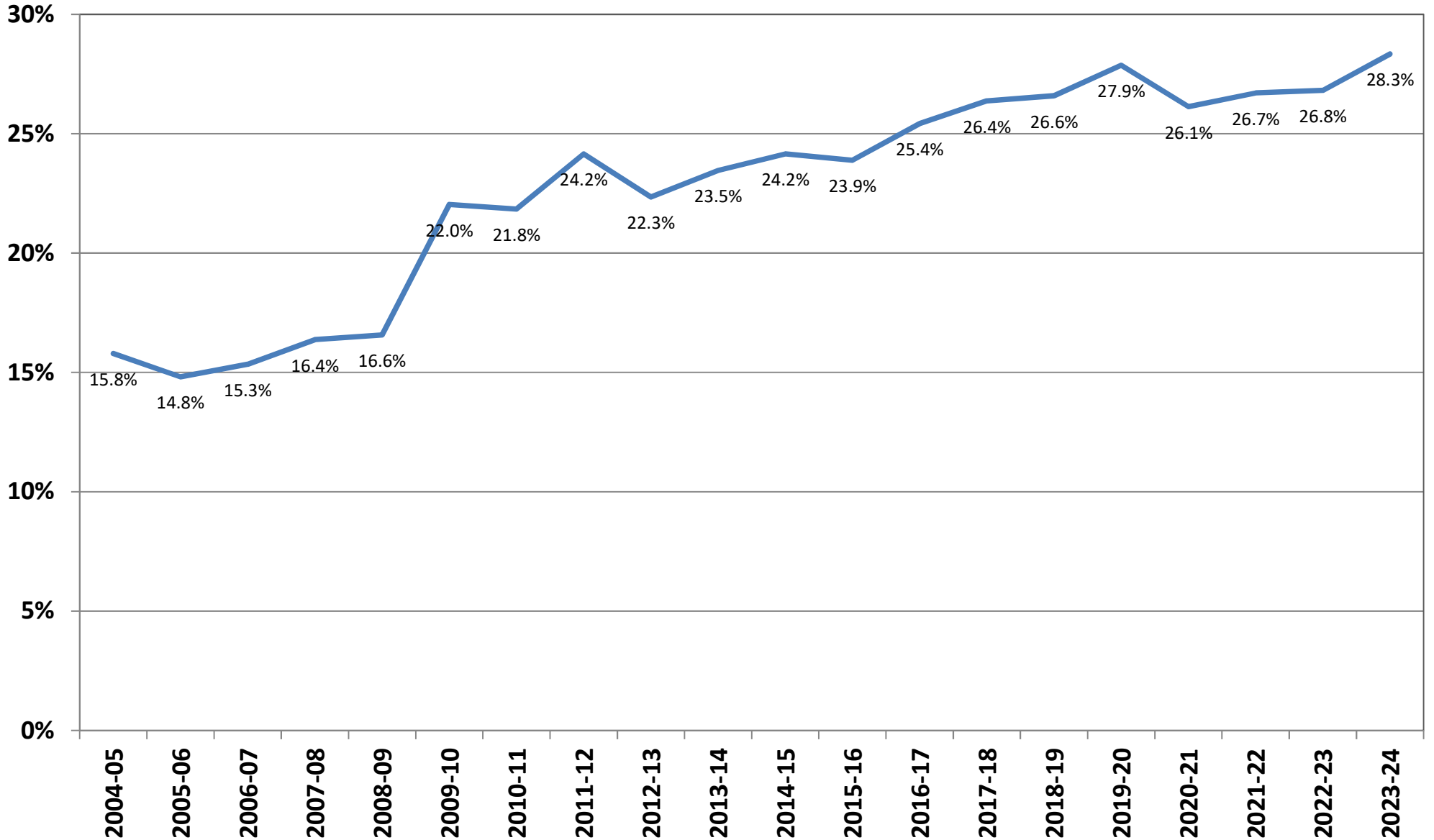
FALL 2023 FULL-TIME UNDERGRADUATES

	ONLY U.S. CITIZENS COUNTED BY RACE/ETHNICITY		ALL STUDENTS COUNTED BY RACE/ETHNICITY	
	#	%	#	%
American Indian or Alaska Native		0%		0.0%
Asian	71	4%	122	6.2%
Black or African American	86	4%	98	5.0%
Hispanic or Latino	227	12%	238	12.1%
Native Hawaiian or Other Pacific Islander	2	0%	2	0.1%
Two or more races	76	4%	79	4.0%
White	1,346	69%	1,382	70.5%
Race unreported	32	2%	38	1.9%
Non-U.S. citizens	119	6%		
TOTALS	1,959	100.0%	1,959	100.0%

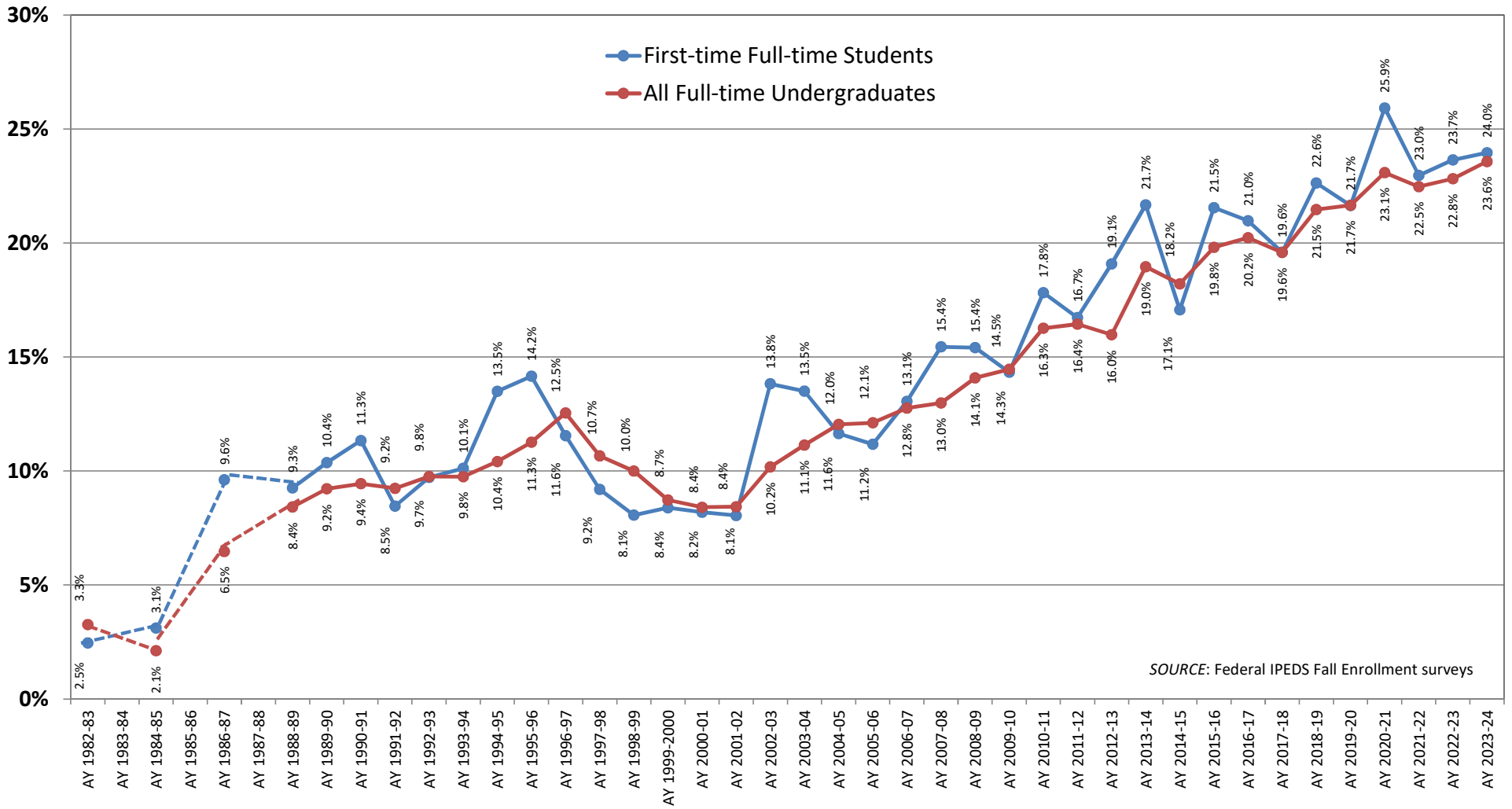
% U.S. citizen students of color	23.6%
% students of color	27.5%

Source: Office of the Registrar, IPEDS Fall Enrollment Survey 2023

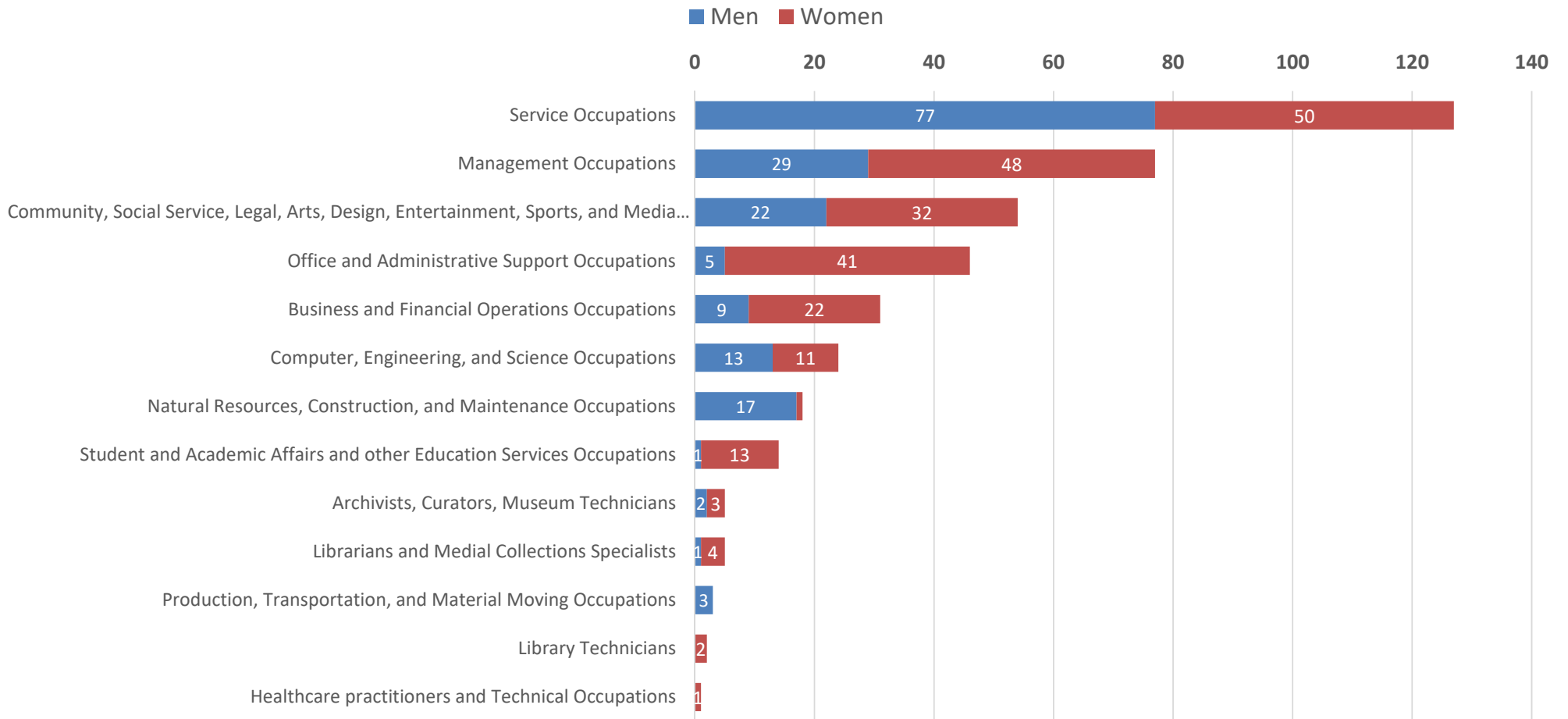
Percentage of Full-Time BIPOC Faculty, Fall 2004 to Fall 2023



Historical Percentage of U.S. Students of Color, Fall 1982 to Fall 2023



Spring 2023 IPEDS Human Resources Data: Full-Time Non-Instructional Staff by Gender



Spring 2023 Full-time Non-instructional staff by race/ethnicity

